

Datto Networking

Get Connected, Stay Connected



datto

Stay ahead of the competition with Datto Networking

In today's hyper-competitive, increasingly global economy, small to medium sized businesses (SMBs) are faced with more communication, logistical and system challenges than ever before. The technology landscape is ever changing, and many SMBs find they are ill equipped to keep up. At the center of it all, these systems are completely reliant on the network. When the network is up, everything's fine. However, business suffers when there are connectivity problems.

Without network and Internet access, productivity grinds to a halt and revenue is lost. Frequently, SMBs lack the requisite IT skills to deploy a network themselves, so they must hire outside help. Typically, this means an IT provider installs the network equipment as a project and then they're done—until something goes wrong and they lose connectivity. That is when the SMB needs the expertise of a skilled managed services provider (MSP). And that is when the MSP needs a networking product line that delivers.





Powerful Hardware

Datto Networking delivers advanced hardware for today's complex networking environments, and includes options that scale as business needs change.

Performance

Datto Networking products deliver the advanced performance needed for any small to medium sized business. Datto Edge Routers perform with throughput speeds of up to 1.7 Gbps on the DNA or line rate on the D200. Datto Switches come in 8, 24 or 48 port options with PoE+ (802.3af/at) included on all ports (PoE budgets range from 55W to 740W). Datto WiFi access points are fully mesh enabled, and deliver powerful indoor/outdoor 802.11ac Wave 2 performance. Datto Networking hardware was built for performance.

MSP-Optimized

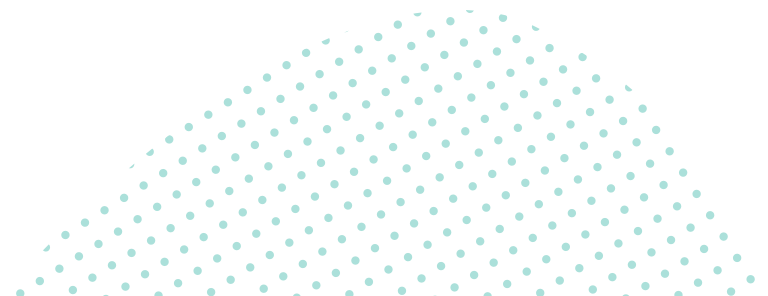
You've determined that an MSP is your best option for IT service delivery, and that makes sense. An MSP has the skills and expertise to keep your business and your network up and continually running.

Datto Networking was purpose-built for delivery by an MSP. That means that we have included specific hardware capabilities and software features that streamline how your MSP delivers networking. These capabilities mean the MSP is more efficient, enabling them to deliver and optimize your network according to your specific needs. And they don't need to unnaturally alter their business to do so. That's what MSP-Optimized networking is all about. It's seamlessly fitting in to your MSP's business model so your MSP can focus completely on solving your business problems.

Network Continuity

Network Continuity from Datto Networking delivers seamless, uninterrupted, always connected network operation with fully integrated 4G LTE failover and failback, always available cloud management, seamless WiFi roaming, self-healing capabilities, hardened security and built-in safeguards designed to ensure maximum uptime.

In business, network connectivity can determine who wins and who loses. It can be the difference between servicing customers or frustrating them to no end. Businesses can't afford to be offline. Datto Networking's always connected, high performance networking products provide businesses with peace of mind, and the confidence that the network will be there when they need it.





Managed Networking

Most SMBs are totally reliant on their network to conduct business operations. Without network and Internet access, productivity grinds to a halt and revenue is lost. So if the network is critical to your business, why would you accept the risk of network downtime?

That's where Datto Networking comes in. The entire product line is purpose-built for IT managed service providers to deliver networking to small to medium sized businesses. Our solutions are designed to keep your business up and running even if your ISP has an outage.

SMB Performance

However, managed networking isn't only about avoiding downtime. You don't want a network that "just works." That's setting the bar too low—SMBs need high performance network and WiFi solutions. They need Datto Networking.

With Datto Networking, managed services providers can design a network that ensures the best possible performance for all of your employees. For example, upon installation, our access points work together to form a self-organizing, self-healing, encrypted mesh network with WiFi roaming automatically enabled. This built-in feature combined with the knowledge and expertise of a Datto Networking partner ensures your employees will have seamless coverage across the entire workplace.

It's Gotta be Secure

You've no doubt heard by now that cybercrime is on the rise. It's gotten to the point that criminals don't even need technical acumen to conduct attacks—ransomware as a service has emerged, allowing just about anyone to extort money from victims. You may have also heard of other recently exposed security exploits that, in theory, could be used by hackers to access sensitive business data via your WiFi network. With Datto Networking's secure product offerings, managed service providers can ensure your network is secure, protecting your business against these types of threats and more.

The stateful firewall and intrusion detection and prevention built into the Datto Networking edge routers will defeat unwanted cyber attacks. Incorporating advanced security features such as stateful packet inspection, layer 7 DPI, port forwarding, DMZ host, enhanced web content filtering and VLAN segregation, the edge routers deliver you peace of mind.

Future Proof

Out of the box, Datto Networking delivers multi-WAN support, managed in the cloud, facilitating network growth when needed. Every port on the 8, 24 or 48 port Datto Networking Switches comes equipped with built-in PoE+ (802.3af/at), increasing expansion opportunities, even when power options are not readily available. And Datto Networking Edge Routers deliver fully integrated 4G LTE failover and failback for always connected Internet so that your business can keep running even when you lose your primary ISP connection. We build our hardware to perform. And, we build our hardware to last.

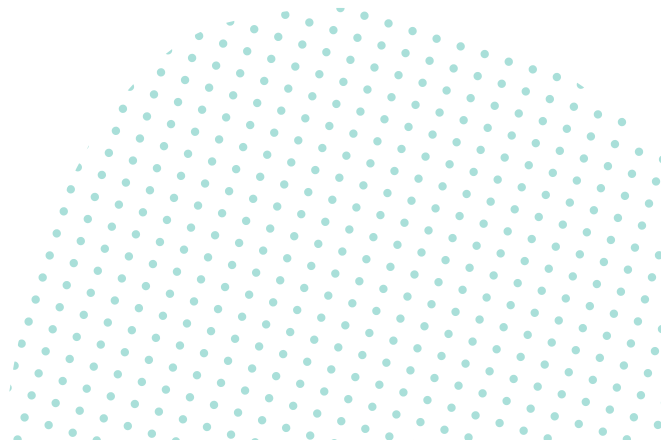
With Datto Networking you won't need to swap out your hardware just to implement new features. You see, we're in this for the long haul. That's why we continually develop and deliver new features through firmware updates. That's why we have more than 200,000 networks deployed and managed in the cloud and more than 40 million connected devices every month. That's why Datto Networking is a product line designed to deliver high performance networking that will grow and evolve with you and your future business needs.

Reduced Network Downtime

Because Datto Networking was purpose-built for delivery by a managed services provider, all management and monitoring functions were designed for the MSP to quickly and efficiently troubleshoot any issues. In fact, your MSP can often see things that are causing your network problems, many times before you even know a problem exists. That translates into less downtime and better network performance.

Mesh Technology

As soon as you plug them in, Datto Networking WiFi access points self-organize into a self-healing, encrypted mesh network with seamless roaming WiFi automatically enabled. Since the beginning, we've recognized what mesh can mean for improved WiFi performance. For example, mesh enables WiFi expansion into physical locations where cabling options are limited. Or, mesh enables WiFi continuity, the ability for an access point to automatically communicate with other APs on the network (self-healing) even when the ethernet cable is cut or damaged. The end result is smarter, simpler mesh-enabled WiFi resulting in better WiFi performance.



A Legacy of Networking Expertise

For more than ten years, the products that comprise Datto Networking have been deployed around the world. With over 200,000 active networks and more than 40 million connected devices every month, Datto Networking brings this long standing legacy of networking expertise to the MSP channel.

Why Haven't You Heard of Datto?

Datto is a channel only company. That means we only sell our products through our channel of MSP partners. We don't sell direct. That means you won't be able to go online and buy Datto Networking without working with one of our partners. And we do that for good reason.

You see, managing a network requires a lot of skill and technical expertise. Our MSP partners have this skill and technical expertise. Managing a network requires a proactive approach to monitoring your business. Our MSP partners have this proactive approach. Deploying a network requires experience and knowledge to ensure you get the networking products that best suit your business' requirements. Our MSP partners have this experience and knowledge.

So we choose to sell through this highly skilled channel in order to ensure you (the SMB) are getting the best out of our products. Why haven't you heard of Datto? Because you aren't our customer. Your MSP is. But aligning yourself with a Datto Networking partner means you are aligning yourself with the best. It means you are ensuring your network will perform to very high standards. It means your network will work.

Cloud Management Started Here

Today, cloud management for networking has become table stakes, even though there are still a few industry laggards. Did you know that from the very beginning, the technology behind Datto Networking has been in the cloud. In fact, one of the very first networking cloud management interfaces was written by our own Michael Burmeister-Brown. You see, we recognized from the very early days of WiFi and networking that cloud management was critical. Cloud management simplifies things, and enables remote deployments and troubleshooting. And when your MSP needs to manage or monitor your network, you want them to do so remotely. Every time they have to come to your office, it costs you money. So we have been cloud managed from the very beginning. It just makes good business sense.



Datto Networking Products

Built for Performance

Datto Networking's intuitive products deliver advanced networking features for today's complex networking environments, and include options that scale as business needs change.



Datto Networking WiFi

Not too long ago, WiFi for business was rare. Then came the IEEE 802.11n standard, and things changed. Today, WiFi is everywhere, and small to medium sized businesses are right in the middle of it.

The current standard is 802.11ac Wave 2. Now, if you don't understand what Wave 2 means, that's ok. What you need to know is that it is faster and can handle more connections than any previous standard. Wave 2 is what has the potential to turn your mediocre WiFi into really good WiFi. And your quickest path to getting there is through your MSP.

MSP-Managed WiFi

Why is an MSP your quickest path to really good WiFi? Simple. MSPs are experts in IT services. They align themselves with the best technology vendors they can to proactively deliver great service to you. That's why we designed the Datto access points specifically for your MSP, to ensure you get the best and most broad wireless coverage.

Universal Mounting Options

Datto Networking access points are designed to be deployed in virtually any environment. With an operating temperature range starting at -20°C up to 50°C, harsh cold or heat are not a problem. And with an IP55 rating, the APs can be installed indoors or outdoors, and can even handle dust and rain.

Powerful WiFi

WiFi networking should always be available, accessible throughout your office, and seamless to every user. That's why Datto Networking WiFi access points deliver powerful, seamless roaming for always connected WiFi. With options ranging from 2 x 2 dual band ac Wave 2 to our newest Tri-Band ac Wave 2 model, you will experience powerful WiFi, backed by your MSP and the team at Datto.

Self-Healing Mesh

All Datto Networking access points are mesh enabled and get their power from PoE+ (802.3af/at). Access points work together to form a self-organizing, self-healing, encrypted mesh network with seamless WiFi roaming automatically enabled. That means no more dead spots. It's WiFi continuity, wherever it's needed.



AP42

802.11ac Wave 2 Indoor/Outdoor
Cloud-Managed WiFi Access Point

AP62

Tri-Band 802.11ac Wave 2 Indoor/Outdoor
Cloud-Managed WiFi Access Point

Wireless Specs & Capacity	AP42	AP62
Bands	2.4GHz + 5 GHz	2.4GHz + 5 GHz + 5 GHz*
Wireless connectivity	802.11a/b/g/n/ac Wave 2 2.4GHz 2x2, 5GHz 2x2 MU-MIMO	802.11a/b/g/n/ac Wave 2 2.4GHz 2x2, Dual 5GHz 2x2 MU-MIMO
Speed (rated)	1.2 Gbps 2.4GHz - 300 Mbps, 5GHz - 867 Mbps	2 Gbps 2.4GHz - 300 Mbps, 5GHz - 867 Mbps, 5GHz - 867 Mbps
Range (approximate)	75' - 150' indoor (3-4 walls) 400' - 600' outdoor	
Max users (recommended)	50-100 per AP	75-150 per AP
Features	AP42	AP62
Cloud Management	Built-in cloud management (no onsite controller/management appliance required), WPA/WPA2 Personal and Enterprise, captive portal/splash pages, Facebook Wi-Fi, user management capabilities, and much more.	
Automatic Firmware Upgrades	Yes	Yes
Automatic Feature Upgrades	Yes	Yes
Zero config plug and play	Yes	Yes
Self-forming, self-healing Mesh	Yes	Yes
Seamless roaming	Yes	Yes
Wireless LAN	4 SSIDs, bridge to LAN, bridge to VLAN (tagging), Public & Private SSIDs	
Hardware & Environmental	AP42	AP62
Warranty	Lifetime Warranty	
Mounting	Installation kit included: t-rail ceiling, solid ceiling or wall, ethernet jack, outdoor wall/pole	
Ethernet/LAN	2 x Gigabit	2 x Gigabit
PoE	Standard 802.3af, Passive 18-24V (mode A, B, A+B)	Standard 802.3af/at, Passive 18-24V (mode A, B, A+B) <i>802.3at recommended</i>
Power Consumption (Peak)	12W	14W
CPU	Qualcomm Dakota IPQ4018	Qualcomm Dakota IPQ4019
Memory	256MB DRAM DDR3	256MB DRAM DDR3
LED Indicators	Nine-color LED status indication	
Hardware watchdog	Yes	Yes
Antennas	Internal - 2 dual-band	Internal - 2 dual-band, 2 single-band
USB (future expansion)	Yes	Yes
Indoor/Outdoor Rating	CE Marked for Indoor/Outdoor Use, IP55	
Certifications	EN 60950-1, EN 55032, EN 62311 (SAR & MPE), UL 60950-1, cUL 60950-1, EN 300.328, EN 301.489-1 and EN 301.489-17, EN 301.893, RCM, C-Tick 4268(2.4GHz) +C-Tick 4268 (5GHz), C-Tick 3548, ICES-003, IC RSS-247(2.4GHz) + IC RSS-246(5GHz), FCC Pat 15 B, C, E	
Operating Temperature	-20° to 50° C (-4° to 122° F)	
Size	169.9mm x 169.9mm x 30.48mm (6.69" x 6.69" x 1.2")	

*Wireless regulations in certain countries require DFS technology to enable the use of a third radio. These regulations may affect Datto Networking partners in EMEA. Please reference the article "AP62 Access Point Hardware and Specifications" in the Datto Knowledge Base.

Datto Networking Switches

Datto Networking Switches seamlessly connect devices and users on the network, enabling users to work smarter and faster. The switches include robust Layer 2 management features including line rate switching, link aggregation, port mirroring/trunking, STP, IGMP snooping, VLAN, port security, storm control, port isolation, attack prevention, ACL, SNMP, and more.

With five models spread across two series (L Series and E Series), Datto switches deliver plug-and-play integration with Datto Networking access points, simplifying how your MSP deploys and manages your network. With simpler networking designed for your MSP, you will experience better performance, reduced downtime and the right networking capabilities for your specific business needs.

Proactive Monitoring

Datto Networking Switches are remotely managed by your MSP. This means your MSP can better monitor and proactively manage your network and all of the connected devices, including the ability to remotely enable, disable or power cycle ports. Your MSP will have visibility into any IP device's power consumption on a per port basis or across all connected devices. This increased visibility enables your MSP to proactively head off any potential problems, including external security threats. And that delivers peace of mind for you and your business.

Designed to Fit

With 8, 24 or 48 port options, and PoE budgets ranging from 55W all the way up to 740W, Datto Networking Switches are designed to accommodate virtually any sized network configuration a small to medium sized business might need. And expanding a network has never been easier. Your MSP can quickly add new switches or APs when your growth demands it. And upon installation, your switches work seamlessly with Datto access points to create a seamless roaming WiFi network. The result is always connected networking backed by your MSP and the team at Datto.



L Series Switches

E Series Switches

Description	Fanless 8-Port 1Gb PoE+ (55W) Cloud Managed Desktop Switch	24-Port PoE+ (250W) Cloud Managed Switch with 2x1Gb SFP Uplinks	8-Port 1Gb PoE+ (150W) Cloud Managed Switch	24-Port 1Gb PoE+ (410W) Cloud Managed Switch with 2x10Gb SFP+ Uplinks	48-Port 1Gb PoE+ (740W) Cloud Managed Switch with 4x1Gb SFP Uplinks
-------------	------------------------------------------------------------	-----------------------------------------------------------------	---------------------------------------------	-----------------------------------------------------------------------	---------------------------------------------------------------------

Ports and Capacity	L8	L24	E8	E24	E48
Access Ports	8x1Gb	24x1Gb	8x1Gb	24x1Gb	48x1Gb
SFP Slots	N/A	2 x SFP 1Gb	2 x SFP 1Gb	2 x SFP + 10Gb	4 x SFP 1Gb
PoE + Capable Ports	Ports 1-8 output up to 30W	Ports 1-24 output up to 30W	Ports 1-8 output up to 30W	Ports 1-24 output up to 30W	Ports 1-48 output up to 30W
PoE Budget	55W	250W	150W	410W	740W
Switching Capacity	20Gbps	52Gbps	24Gbps	56Gbps	104Gbps

Features	L8	L24	E8	E24	E48
Cloud Management	No onsite management appliance required, automatic firmware upgrades, automatic future-proofing via new and upgraded features				
Layer 2 Features	Link Aggregation (LAG)/LACP, jumbo frames				
VLANs	802.1Q VLANs (up to 4k)				
Spanning Tree Protocol	802.1D Spanning Tree (STP), 802.1w Rapid Spanning Tree (RSTP), 802.1s Multiple Spanning Tree (MSTP)				
Multicast Delivery	IGMP Snooping v1/2/3				
QoS (Quality of Service)	802.1p/CoS, DSCP, rate limiting, flow control				
Security Features	MAC ACLs, IPv4 ACLs, port Isolation				
PoE Management	Power on/off per port, power class, power priority, User defined power limit				
Monitoring & Troubleshooting Tools	LLDP, SNMP v1/v2c, ping, traceroute, cable diagnostics, port mirroring				
MIB Support	RFC1213, RFC1493, RFC1757, RFC2674				
VoIP Support	QoS, Voice VLAN + OUI list, LLDP-MED				

Hardware & Environmental	L8	L24	E8	E24	E48
Warranty	Lifetime Warranty				
Mounting	Desktop, wall mount	Desktop, wall mount, rack mount (included)			
Power Supply	External Power Supply	Internal Power Supply			
Power Cable	US/Canada/EU/UK/AU				
PoE Standard	IEEE 802.3at/af up to 30W per port				
SDRAM	256MB				
Flash Memory	32MB				
SFP Support	N/A	1000BASE-SX, 1000BASE-LX, 10GBASE-SR, 10GBASE-LR			
LED Indicators	Power, Fault, PoE Max, LAN Mode, PoE Mode, Link/Act	Power, Fault, PoE Max, LAN Mode, PoE Mode, Speed, Link/Act	Power, Fault, PoE Max, LAN Mode, PoE Mode, Speed, Link/Act		
Dimensions	238.8mm x 104.1mm x 27.9mm (9.4" x 4.1" x 1.1")	439.4mm x 256.5mm x 43.2mm (17.3" x 10.1" x 1.7")	330.2mm x 228.6mm x 43.2mm (13" x 9" x 1.7")	439.4mm x 309.9mm x 43.2mm (17.3" x 10.2" x 1.7")	439.4mm x 408.9mm x 43.2mm (17.3" x 16.1" x 1.7")
Weight	1.37 lbs.	7.65 lbs.	4.48 lbs.	7.65 lbs.	13.8 lbs.
Operating Temperature	0° to 40°C (32° to 104°F)	0°C to 50°C (32° to 122°F)	0°C to 50°C (32° to 122°F)		
Storage Temperature	-20°C to 70°C (-4° to 158°F)		-40°C to 70°C (-40° to 158°F)		
Humidity	5 to 95% non-condensing				
Compliance Certifications	FCC Class A, IC, CE, RCM, UL				



Datto Networking Edge Routers

What happens when you lose your connection to the Internet? It's not fun. And often, that key project you have to get finished...well, it's suddenly not easy to finish.

That's why we built the Datto Networking Edge Routers, to solve one of the most important connectivity problems you face today: keeping your Internet up and running even if your primary Internet connection goes down, so you can get that job done. And we all know this happens a lot, especially if your business is relying on a local cable company for Internet.

Fully Integrated 4G LTE keeps your Internet going

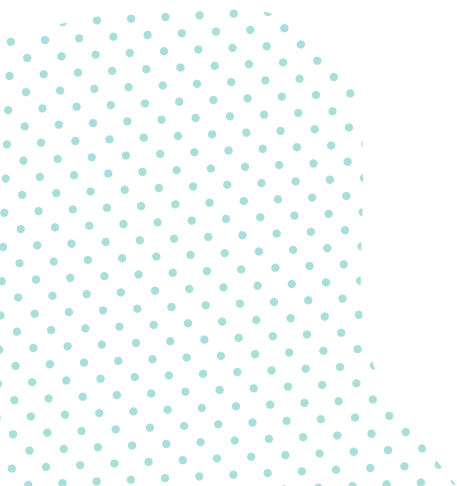
With fully integrated 4G LTE combined with out of the box ready carrier service, Datto's edge routers enable our MSP partners to deliver always connected Internet to you. That means that when your ISP is offline, you aren't.

Datto Edge Routers offer two types of LTE service: Full Internet failover, available on the DNA and the D200, to keep your office online during an Internet outage. Or our exclusive LTE Management, available on the D200, a service that utilizes LTE to give your MSP access to manage and configure any Datto device on the network when the primary Internet connection is down.

And we do this without requiring a contract with the wireless carrier. And we don't track your data usage. We simply keep you and your MSP connected.

High Performance Routing

Solving the always connected Internet problem is big. But we're not satisfied with just that. That's why we built the Datto Networking Edge Routers to deliver high performance routing capabilities including robust VPN features, Layer 7 deep packet inspection enabling the ability to categorize traffic by application, NATing rules, traffic shaping and more. And with the horsepower to enable throughput speeds of up to 1.7 Gbps on the DNA and 2+ million packets per second on the D200, the Datto Networking Edge Routers deliver performance for nearly any small to medium sized business.



Born in the Cloud

All Datto Networking products are fully managed in the cloud. Why is that important? So your MSP can quickly and easily manage your network...remotely.

Think about it. If your MSP had to come onsite every time you had a network problem, you would waste a lot of time just waiting. And when you are waiting, you aren't getting work done. Being born in the cloud means your MSP can efficiently and proactively manage all of your network devices, heading off problems before you even know about them. That saves you time and ultimately money.

Advanced Security

We've all heard the stories of ransomware or malware attacks. What is not commonly known is that these attacks are not just a big business problem. Ransomware or other malware attacks are agnostic as to whom they go after. Security at the edge is absolutely critical, which is why you need an MSP who delivers an edge routing device with advanced security features.

Datto Networking Edge Routers include a stateful firewall with layer 7 deep packet inspection, port forwarding, DMZ host, and VLAN segregation. Add to that Datto's enhanced web content filtering, a vital security layer at the DNS level, and your MSP can help you stop threats before they ever get to your network. Backed by Titan HQ, a service that crawls over 700 million URLs, 6 billion web pages in 200 languages, and reviews 5 trillion search queries in real time, every single day, Datto's advanced security enables you to be confident that your MSP and Datto will effectively protect you against unwanted threats and attacks.



Datto Networking Appliance

Features

Alerts & Notifications
RMM/PSA Integration
IPv4
Layer 7 Traffic Management
Hosted VoIP Support
Supports up to 8 VLANS
APT Blocker
Network Discovery
PPPoE
Port Aggregation
Traffic Shaping
Static routing for internal routes—excludes WAN routes and policy-based routes

Firewall

Stateful Packet Inspection
Port Forwarding
1:1 NAT
1:Many NAT
DMZ Host
Layer 7 DPI

Enhanced Web Content Filtering

DNS Security Layer
Malware & Ransomware Protection
Real-time Continuous Updates
Web Content Control

Security

Intrusion Detection System
Intrusion Prevention System
Port Scanning
Signature-based Rule Files
Web Filtering
Whitelisting
Ad Blocker

Failover

Bundled 4G LTE Service
No Carrier Contract Required
No Charges for Overages
WAN Failover

Hardware

8 Core 2.4GHz Intel Processor
8 GB DDR3 RAM
32 GB Industrial Compact Flash Hard Drive
6 Built-in 10/100/1000 Ethernet Ports - 2 Dedicated WAN Ports, 4 Configurable VLAN Ports
3x3 MIMO 802.11 AC WiFi 2.4/5GHz
Fully Integrated Multi-band Cat4 Radio (LTE)

Environmental

0° to 40°C (32° to 104°F) Operating Temperature
Dimensions: 231mm x 197mm x 44mm (9.09" x 7.76" x 1.73")

VPN Support

SSL (Open VPN)
IKEv2
IPSec
Hub & Spoke (multi-router)

Performance

250,000 Concurrent Connections
1.7 Gbps Firewall Throughput (1,518 Packet Size)
661 Mbps IPS Throughput (372 Packet Size)
569 Mbps DPI Throughput (372 Packet Size)
730 Mbps IMIX Throughput (372 Packet Size)*
<small>*IMIX (or Internet Mix) is a metric stimulating Internet traffic flowing through various networking equipment, and is intended to represent how Internet traffic would flow in real world conditions.</small>

Management & Warranty

Cloud Management: dna.datto.com
3 Year Advanced Replacement Warranty

Sold & supported in the following locations

USA, Puerto Rico, US Virgin Islands, Canada, Scotland, Ireland, Northern Ireland, Wales, England, Portugal, Spain, Germany, Italy, Netherlands, Czech Republic, Hungary, Romania, Greece, Albania, Montenegro**

**For specific coverage, see the DNA Coverage Map



D200

Features

Alerts & Notifications

WAN DHCP/Static IP/ PPPoE

Hardware network acceleration

Traffic Shaping

Layer 7 Traffic Management

VLAN tagging

Up to 5 Combined LANs/VLANs

Firewall

Stateful Packet Inspection

Port Forwarding

1:1 NAT

1:Many NAT

Layer 7 DPI

Custom traffic rules (port blocking)

Enhanced Web Content Filtering

DNS Security Layer

Malware & Ransomware Protection

Real-time Continuous Updates

Web Content Control

Failover

LTE Failover

Bundled 4G LTE Service

No Carrier Contract Required

No Charges for Overages

LTE Management

Hardware

Mediatek 7623A quad-core ARM processor

1GB DDR3 RAM

4GB eMMC Flash

5 built-in 10/100/1000 Ethernet Ports: 1 WAN Port, 4 configurable LAN Ports (2 24V Passive PoE ports)

1 built-in SFP port

Fully Integrated Multi-band Cat4 Radio (LTE)

Environmental

0° to 40°C (32° to 104°F)
Operating Temperature

Dimensions: 7.9" x 4.7"

VPN Support

VPN Server (Open VPN)

VPN Site-to-Site (IPSec, IKEv2)

Hub & Spoke (multi-router)

Performance

2+ Million packets per second

Line rate (1 Gbps) routing. Varies based on traffic type and packet size.

Management & Warranty

Fully integrated into Datto Cloud portal and mobile app

Lifetime Warranty



datto

Corporate Headquarters

Datto, Inc.
101 Merritt 7
Norwalk, CT 06851
United States
partners@datto.com
www.datto.com
888.294.6312

Global Offices

USA: 888.294.6312
Canada: 877.811.0577
EMEA: +44 (0) 118 402 9606
Australia: +61 (02) 9696 8190
Singapore: +65-31586291

©2019 Datto, Inc. All rights reserved.
Updated 06 July 2020