

Ethernet Switches

Simple cloud management

Datto switches continue to deliver on the expectation of simple, robust cloud-management capabilities to ensure a smooth evolution while delivering orders of magnitude improvements in speed and functionality.

Next level flexibility

Datto provides powerful, business-class ethernet switching products with affordable models and flexible product options making it easy to find a solution to meet most requirements for IP business communications.

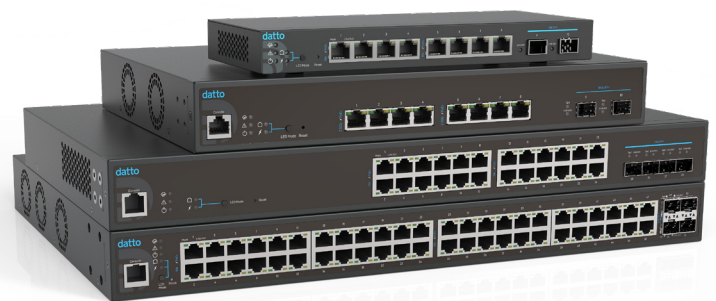
- Low, medium and high density configurations
- High capacity optical uplink ports
- Scalable power budget for PoE devices
- Low noise-level cooling
- High-temperature thermal operation
 - Configuration templates allow for quick provisioning of common configuration
 - IP Routing (with future software release)

Multi-gigabit 2.5G/10G switch

In select configurations, take advantage of multi-gigabit copper access ports to increase network performance and boost high bandwidth applications such as backup and restore, or maximize the benefits of a Wi-Fi 6 WLAN deployment.

Power over ethernet on all ports

Datto next generation switches deliver total power output ranging from 110W to 410W to energize compatible devices. Eliminate the need for additional power runs and bulky injectors to satisfy the growing demand of high consumption endpoints such as wireless access points, IP cameras, smart lighting, digital signage or point-of-sale systems.





DSW100-8P-2G



DSW100-24P-4X



DSW100-48P-4X



DSW250-8P-2X

	Gigabit Ethernet		Multi-Gigabit Ethernet	
Port Density and Power Output	8x GigE 2 SFP 110	24x GigE 4 SFP+ 250	48x GigE 4 SFP+ 410	8x2.5 GigE 2 SFP+ 240
Layer 1 Features	Power on/off per port, power class configuration, power feeding with priority, user-defined power limit, IEEE 802.az Energy Efficient Ethernet (EEE)			
Backplane Capacity	20			
Backplane Capacity (Gbps)	128			
Layer 2 Specifications	176			
Maximum VLANs	4096			
Max Frame Size	Up to 10K bytes			
Unicast Mac Address	8K			
Packet Buffer Memory	4.7M bits			
Layer 2 Features	Up to 12K bytes 16K 12M bits			
Layer 2 Features	Up to 9K bytes 32K 16M bits			
Layer 2 Features	Up to 10K bytes 8K 4.7M bits			
Spanning Tree Protocol	802.1Q VLANs, Port Trunking/802.3ad link aggregation, port mirroring, auto-detect uplink port, port isolation, IGMP snooping, rate limiting (Tx/Rx), flow control, jumbo frames, LLDP (Up to 256 unique VLAN IDs can be configured)			
VoIP Provisioning	802.1w Rapid Spanning Tree (RSTP), 802.1s Multiple Spanning Tree (MSTP)			
Layer 3 Specifications [* = In future software upgrade]	QoS, Voice VLAN + OUI list, LLDP-MED			
IPV4 Static Route and Default Route*	Up to 63 entries			
DHCP*	DHCP Relay, DHCP Snooping			
Access Control	MAC, IPv4 Based ACLs, Actions: Permit/Deny			
Quality of Service	802.1p/CoS, DSCP			
Remote and Local Management and Monitoring	Full support within Datto Network Manager, no on-site appliance required.			
Cloud Management	v1/v2s, supporting MIBs RFC1213, RFC1493, RFC1757, RFC2674			
SNMP Polling	Cable Diagnostics, Ping, Traceroute			
Troubleshooting Tools	Cable Diagnostics, Ping, Traceroute			
Physical & Environment	Operation: 10%–90% RH Storage: 5%–95% RH			
Mounting	Desktop, wallmount			
AC Input	100-240 VAC, 50/60Hz External power adapter 54V/2.22A		Desktop, wallmount, rackmount	
Operation Temperature	0–40°C		100-240 VAC, 50/60Hz	
Storage Temperature	–20–70°C		0–50°C	
Humidity	240x105x27 mm		–40–70°C	
Dimension (WxDxH)	440x410x44mm		Desktop, wallmount, rackmount	
Certifications	FCC, CE (Class A)		100-240 VAC, 50/60Hz	
Peak Power (Watts)	120		0–50°C	
	440x410x44mm		–40–70°C	
	FCC, CE, Canada, and C-Tick		350x230x44 mm	
	300		FCC, CE	
	480		300	

Corporate Headquarters

Kaseya Miami
701 Brickell Avenue
Suite 400
Miami, FL 33131
partners@datto.com
www.datto.com
888.294.6312

Global Offices

USA: 888.294.6312
Canada: 877.811.0577
EMEA: +44 (0) 118 402 9606
Australia: +61 (02) 9696 8190
Singapore: +65-31586291